



The new Moldascan® type 4 plaster

We strive for perfection – and achieve precision

- Significantly reduced surface roughness
- Optimised raw materials
- Very thixotropic
- Optimally adapted to all laser light scanners through absence of red pigments
- Good flowability
- Easy to build up
- Optimised detail rendition and reproduction



Hera

Behind every face there's
a strong framework.

Compare for yourself – Moldascan features much lower surface roughness

Optimised raw materials greatly improve Moldascan's physical properties. Through a superior crystallisation process, your plaster model will feature significantly reduced surface roughness (see Figs. 1 and 2).

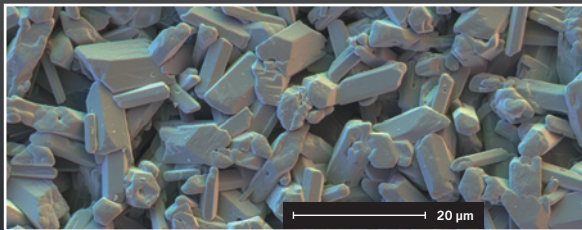


Fig. 1 Normal surface roughness of the competition's scan plasters.

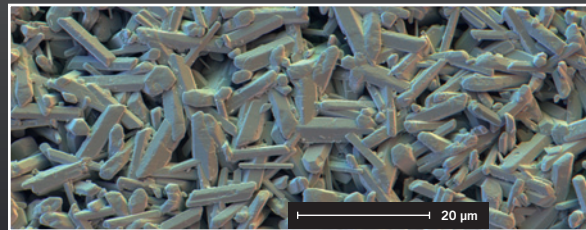


Fig. 2 Distinctly reduced surface roughness of Moldascan.

The average roughness (R_a) is lowest in Moldascan, i.e., it features the smoothest surface of all examined plasters. This applies to both the base and lateral surfaces of the cube-shaped test object.

Facility performing the comparison test:

Independent analytical specialist
Mainsite GmbH & Co. KG, Industrial Centre Obernburg,
D-63784 Obernburg, www.aso-mainsite.de

Indications:

- Crown and bridge technology
- Inlay and onlay technology

Compared with other plasters, the super-smooth surfaces now permit very precise, detailed reproductions. The absence of red pigments in Moldascan is the ideal basis for optimal adjustment to all laser light scanners.

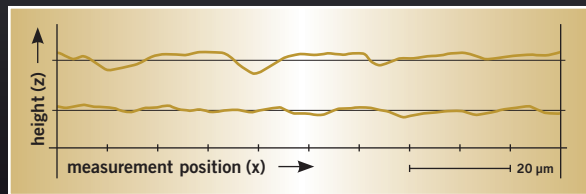


Fig. 3 Comparison of roughness profiles of a competitor (above) and Moldascan (below).

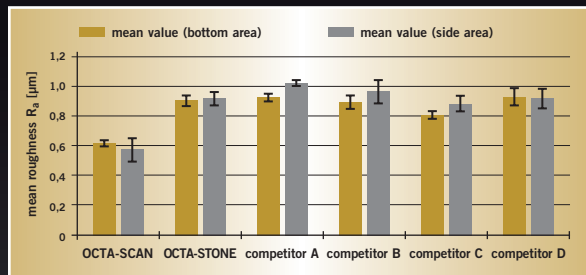


Fig. 4 Average roughness (R_a) of different samples (occlusal and lateral surfaces).

Fax order form:

customer number: _____

quantity	order number	article description	colour	delivery form	price/€
	66040201	Moldascan	sand	18 kg	126,-
	66041505	Moldascan	sand	4,5 kg	34,-

Heraeus Kulzer GmbH
Grüner Weg 11
63450 Hanau
Telefon: 0800.4372522
Telefax: 0800.4372329
info.lab@heraeus.com
www.heraeus-dental.com

Customer address / stamp