

Heraeus

Variotime®

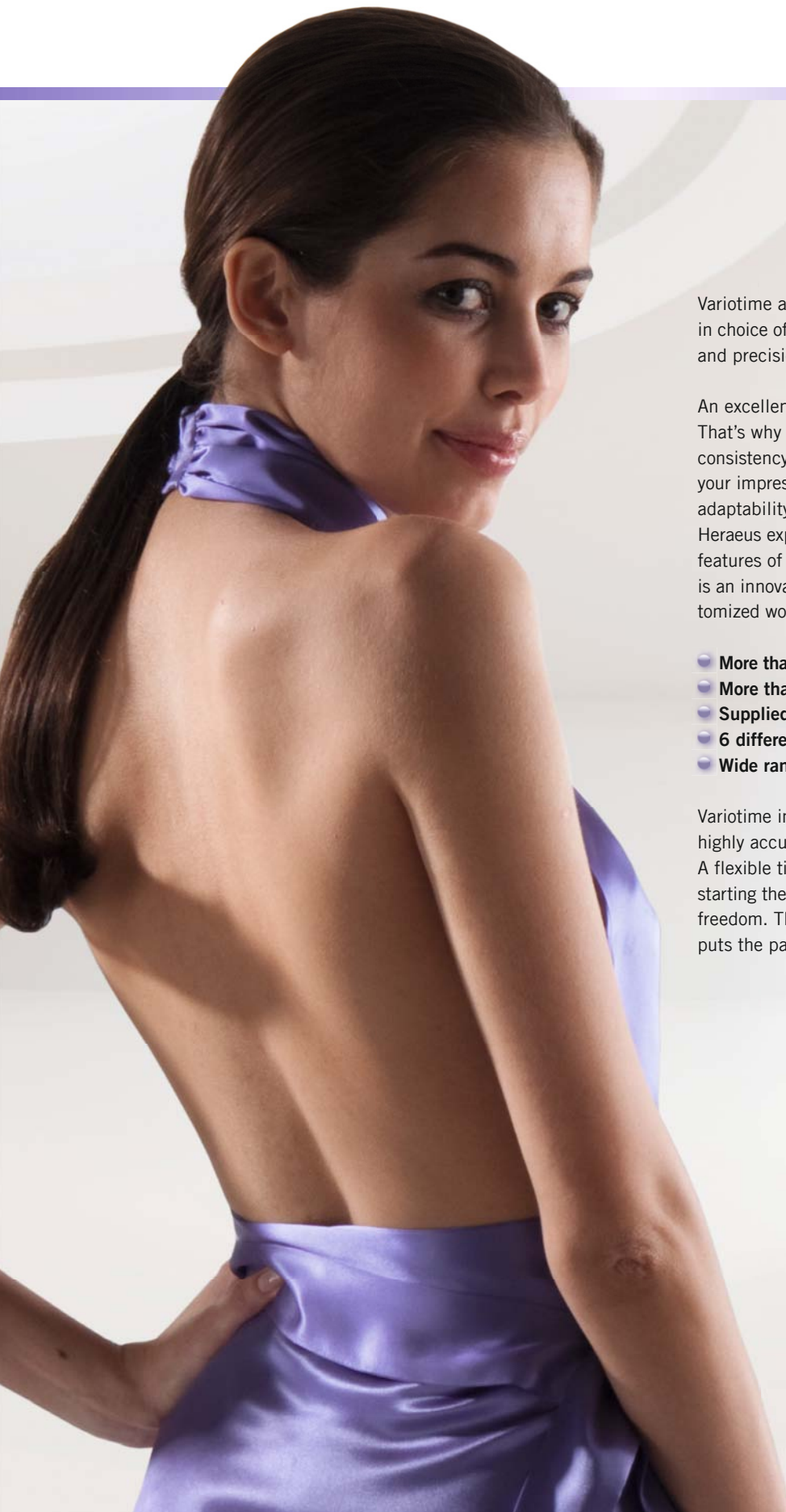
Freedom to impress



Variotime® 
The right impression. Everytime.

Welcome to Variotime®

How would you define freedom?



Variotime adapts to your needs at all times. For flexibility in choice of working time and in starting the setting time – and precision you can depend on.

An excellent impression is crucial to modern prosthetics. That's why you place such high demands on the quality, consistency and physical as well as handling properties of your impression material. You also need process-oriented adaptability. Variotime combines more than 25 years of Heraeus experience with the outstanding performance and features of a precision impression material. The outcome is an innovative A-silicone which guarantees precise, customized working procedures.

- **More than 25 years of Heraeus experience in A-silicones**
- **More than 25 years of research and development**
- **Supplied in 3 different delivery forms**
- **6 different viscosities**
- **Wide range of indications**

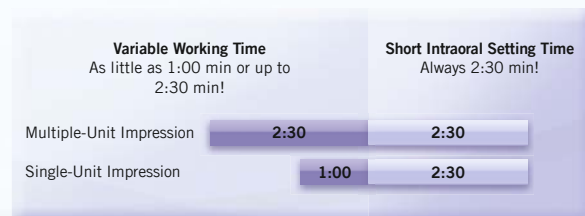
Variotime impresses with its outstanding precision and highly accurate details reproduced in the impression. A flexible time concept also provides more leeway with starting the setting time, thereby allowing greater handling freedom. This means less stress for the dentist – and puts the patient more at ease, as well.

Impressive handling and results

Freedom can be this simple

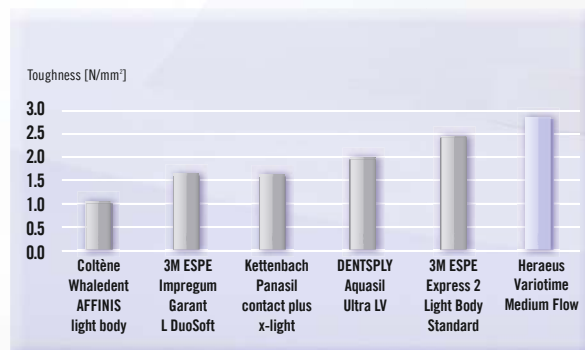
Straightforward, adaptable handling

- Mixed automatically, using the new Dynamix speed System
- One material with variable applications – for single crowns as well as multi-unit prosthetic restorations
- Variable working time, ranging from 1:00 – 2:30 minutes
- Short intraoral setting time of 2:30 minutes
- Convenient, time-saving working



More leeway with starting the setting time – Variotime controls the polymerisation kinetics by mouth temperature and sets rapidly after insertion into the mouth.

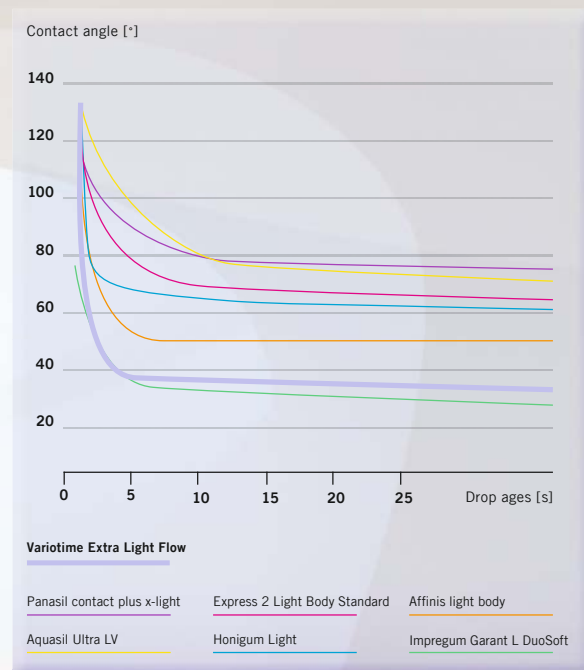
Results of in vitro study about the toughness of 6 different impression materials



In this study, Variotime Medium Flow proved the highest toughness which enables best to prevent tearing of flashes and distortion upon removal.

Source: Thermoplastic Testing Centre, Bayer Material Science AG, Krefeld-Uerdingen, Germany, March 2009, data on file.

Results of in vitro study about contact angles of unset impression materials



The contact angles of a water drop on Variotime Extra Light Flow – a measurement for hydrophilicity – are on Polyether level and demonstrate Variotime's excellent performance in the wet sulcus.

Source: Geis-Gerstorf, J.: Hochaufgelöste Kontaktwinkel-Messungen, University of Tübingen, Germany, May 2009, data on file.

Precision of fit

- Low dimensional changes (-0,001 %) ensure most exact dimensional accuracy *
- Reproduces details of under 20 µm **
- Convincing hydrophilic properties – high reproduction of details thanks to excellent flowability

* Source: Piwowarczyk, A. et al., In Vitro Study on the Dimensional Accuracy of Selected Materials for Monophase Elastic Impression Making, Int J Prosthodont 2002; 15:168-74. The material tested in this study is equal to the product Variotime Monophase.

** Source: Kanehira, M. et al., Surface detail reproduction with new elastomeric dental impression materials. Quintessence Int 2007; 38:479-488

Individual characteristics à la Variotime®

The all-rounder among A-silicones

Indication	Technique	Viscosity of tray material	Product Recommendation
Crowns/Bridges	Two-Step Impression	High viscous	Step 1 ■ Variotime® Heavy Tray Step 2 ■ Variotime® Extra Light Flow
		Kneadable, high viscous	Step 1 ■ Variotime® Putty Step 2 ■ Variotime® Extra Light Flow
	Double-Mix Impression	High viscous	■ Variotime® Heavy Tray + ■ Variotime® Medium Flow/ ■ Light Flow
	Sandwich Impression	Kneadable, high viscous	■ Variotime® Putty + ■ Variotime® Medium Flow/ ■ Light Flow
	Monophase Impression	Medium viscous	■ Variotime® Monophase
Functional Impressions	Monophase Impression	Medium viscous	■ Variotime® Monophase

Variotime Putty

Suitable for:

Two-step impressions, Sandwich Impressions

- Soft mixing consistency
- High final hardness for high pressure on wash material and low deformation of impression
- Easy to cut for two-step technique
- Available in the Dynamix Cartridge for dynamic mixing and as a hand-mix putty

Variotime Heavy Tray

Suitable for:

Two-step impressions, Double-mix Impressions

- High final hardness for precision and dimensional stability
- Excellent qualification for transfer and implant impressions
- Available in the Dynamix Cartridge for dynamic mixing and as automix cartridge

Variotime Monophase

Suitable for:

Monophase impressions

- Balanced final hardness – stability for precision of impression and ease of removal
- Distinct thixotropy
- Suitable as tray material and for syringing around the preparation
- Available in the Dynamix Cartridge for dynamic mixing and as automix cartridge

Indication	Technique	Viscosity of tray material	Product Recommendation
Inlays/Onlays	Double-Mix Impression	High viscous	<ul style="list-style-type: none"> ■ Variotime® Heavy Tray + ■ Variotime® Medium Flow/ ■ Light Flow
	Sandwich Impression	Kneadable, high viscous	<ul style="list-style-type: none"> ■ Variotime® Putty + ■ Variotime® Medium Flow/ ■ Light Flow
	Monophase Impression	Medium viscous	<ul style="list-style-type: none"> ■ Variotime® Monophase
Transfer/Implant Impressions	Double-Mix Impression	High viscous	<ul style="list-style-type: none"> ■ Variotime® Putty + ■ Variotime® Medium Flow/ ■ Light Flow
	Monophase Impression	Medium viscous	<ul style="list-style-type: none"> ■ Variotime® Monophase

Variotime Medium Flow

Suitable for:

Double-mix Impressions, Sandwich Impressions

- Wash material with medium consistency
- Strong hydrophilicity for excellent performance in the sulcus
- High elasticity and toughness
- Ideally suited for double-mix/sandwich impressions as it is more viscous than Variotime Light Flow and thus complements high viscous tray materials in this techniques
- Available as automix cartridge

Variotime Light Flow

Suitable for:

Double-mix Impressions, Sandwich Impressions

- Wash material with light consistency
- Hydrophilic properties for excellent flow characteristics
- High elasticity and tear-resistance
- Ideally suited for double-mix/sandwich impressions as it is more viscous than Variotime Extra Light Flow and thus complements high viscous tray materials in this techniques
- Available as automix cartridge

Variotime Extra Light Flow

Suitable for:

Two-step impressions

- Wash material with extra-light consistency
- Superior hydrophilicity on Polyether level for excellent performance in the sulcus
- High elasticity and toughness
- Especially recommended for two-step impressions, as the very low viscosity of Variotime Extra Light Flow is very well suited for obtaining the desired thin layer of wash material
- Available as automix cartridge

The Variotime assortment is a well thought-out, coordinated all-round system for all impression techniques.

High-speed precision at the push of a button

The Dynamix® speed System



Go double-speed:
Twice as fast
as before!

Button for
syringe filling

Button for
tray filling

Speed
selection

Practical cartridges and the NEW functional Dynamix speed mixer are perfectly matched in this well thought-out system featuring all the advantages of automatic mixing for impression materials, above all: even more time savings due to high speed, simple handling and a consistent, void-free mixture. Together with the consistency of the material, this is the foundation for precise results.

Easy, reliable and efficient handling

- High-speed mixing and precise dispensing, also for Putty viscosities
- Savings in time and materials
- 3 selectable velocities – 2 for loading trays (Dynamix high speed ⊕, standard speed ⊗) and 1 for syringes (speed adapted to syringe-filling)
- Automatic propulsion and reverse drive of plungers at the press of a button
- Clearly marked functional elements
- Cartridges marked with Dynamix speed Symbol ⊕

Reliable in quality and precision

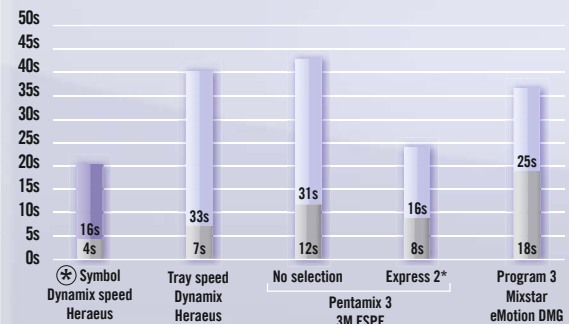
- Homogeneously and void-free mixed impression materials leading to precisely fitting prosthetic restorations
- Reproducible material properties
- Consistent quality of mix, independent of operator, for consistent precision of fit

Dynamix speed is twice as fast, even with Putty material!

Tray filling time Flexitime Dynamix Putty, average tray size (40 ml)

Total tray filling time (after pressing of extrusion button)

■ Tray filling time for filling of mixing tip
■ Tray filling time after filling of mixing tip



*Pentamix 3 offers the fast extrusion speed exclusively for 3M ESPE products, therefore tested with Express 2

Product	Order no.
Dynamix Cartridge Refills	
<ul style="list-style-type: none"> Variotime Dynamix Putty Refill 3 x (2 x 380 ml) Dynamix Putty, 3 x 2 Dynamix Mixing Tips, 3 x 1 Dynamix Fixation Ring 	66044995
<ul style="list-style-type: none"> Variotime Dynamix Heavy Tray Refill 3 x (2 x 380 ml) Dynamix Heavy Tray, 3 x 2 Dynamix Mixing Tips, 3 x 1 Dynamix Fixation Ring 	66045000
<ul style="list-style-type: none"> Variotime Dynamix Monophase Refill 3 x (2 x 380 ml) Dynamix Monophase, 3 x 2 Dynamix Mixing Tips, 3 x 1 Dynamix Fixation Ring 	66045034
Handmix Trial Kit	
<ul style="list-style-type: none"> Variotime Easy Putty + Flow Trial Kit 1 x 600 ml Easy Putty (each 300 ml Base & Cat.), 1 x 50 ml Light Flow, 5 x Mixing Tips yellow, 5 x Intraoral Tips, 1 x Universal Adhesive (10 ml) 	66045044
Handmix Refill	
<ul style="list-style-type: none"> Variotime Easy Putty Refill 4 x 600 ml Easy Putty (each 4 x 300 ml Base & Cat.) 	66044993
50 ml Automix Cartridge Refills	
<ul style="list-style-type: none"> Variotime Heavy Tray Refill 6 x (2 x 50 ml) Heavy Tray, 6 x 5 Mixing Tips green 	66044998
<ul style="list-style-type: none"> Variotime Monophase Refill 6 x (2 x 50 ml) Monophase, 6 x 5 Mixing Tips green 	66045032
<ul style="list-style-type: none"> Variotime Medium Flow Refill 6 x (2 x 50 ml) Medium Flow, 6 x 10 Mixing Tips yellow 	66045036
<ul style="list-style-type: none"> Variotime Light Flow Refill 6 x (2 x 50 ml) Light Flow, 6 x 10 Mixing Tips yellow 	66045038
<ul style="list-style-type: none"> Variotime Extra Light Flow Refill 6 x (2 x 50 ml) Extra Light Flow, 6 x 10 Mixing Tips yellow 	66045040
<ul style="list-style-type: none"> Variotime Bite Cartridge Refill 3 x (2 x 50ml) Variotime Bite, 3 x 10 Mixing Tips green 	66045042



Contact in Germany

Heraeus Kulzer GmbH

Grüner Weg 11
63450 Hanau
Phone 0800 43 72-522
Fax 0800 43 72-329
info.dent@heraeus.com
www.heraeus-dental.com

Contact in Hungary

Heraeus Kulzer

Dental Consulting
Stefánia út 81
HU-1143 Budapest
Hungary

Heraeus Dental Singapore

c/o Heraeus Materials Singapore Pte. Ltd.

Block 5014 Ang Mo Kio Street 5
#07-01 TechPlace II
Singapore 569881
Phone +65 6571 7888
Fax +65 6571 7599
marketing.hdsg@heraeus.com
www.heraeus-dental.com